

# COVID-19

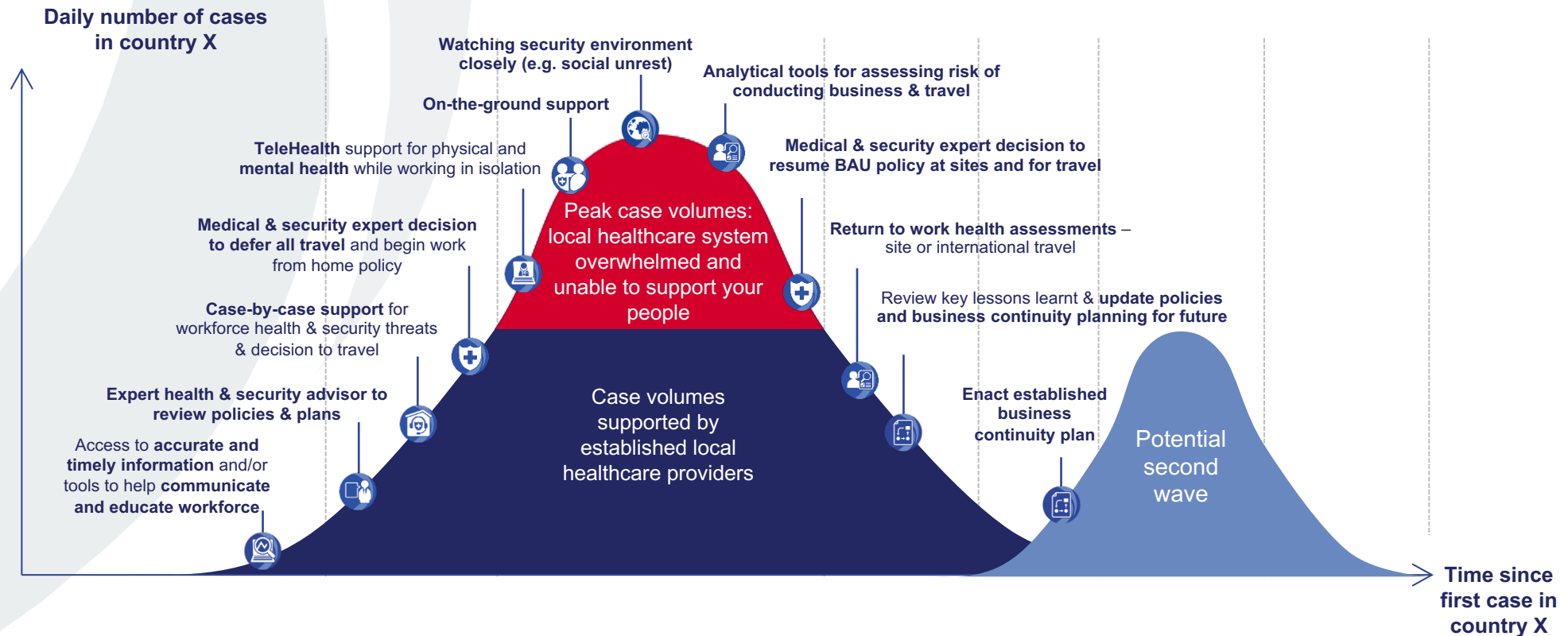
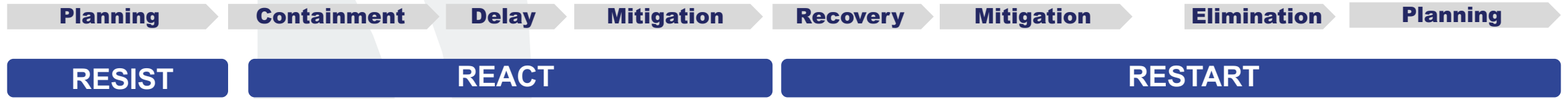
## Preparing for Return to Operations in a New Norm

SUPPORTING SAFE RTO & SUSTAINABLE BUSINESS PERFORMANCE



# COMBATING COVID-19 PANDEMIC

## EVOLVING HEALTH & SECURITY NEED AT WORKFORCE





# Phases of Return To Office From Recovery to the 'New Normal'



## Planning

### Space

- Cleaning & disinfection
- Social distancing signage & taping
- Ventilation review

### Knowledge

- Social distancing & PPE
- Social distancing signage & taping
- Review of COVID & infectivity

### People

- Cohort segregation
- Comms & transportation strategy
- Guidelines review

### Screening

- Virtual screening questionnaire
- Screening for 'high' comorbidities
- Confirmatory screening by TeleConsult

### Equipment

- PPE (masks, gloves)
- Hand cleaner pumps
- Hand-held & thermal thermometers

### Security

- Threat assessment
- Early indicators matrix
- Security escalation planning
- Staff security training

## Return

### Screening

- Temperature screening
- RDT Antibody screening
- Clinical screening

### Knowledge

- 'Hot' case drills
- Manager workshops on distancing
- Life Resilience Workshops

### Health

- Onsite re-assessment at clinic
- Onsite support for other health issues
- Offsite support through TeleConsult

### Security

- Travel Policies & Guidelines
- Simulaton Exercise

## Maintenance

### Screening

- Virtual screening questionnaire
- Temperature screening



# CASE STUDY: ENGINEERING SECTOR

---

## **Client**

Engineering company in the EMI sector. They deploy small teams of high level engineers on remote sites around the world.

## **Client challenges and requirement**

- Varying levels of security risks amidst quickly evolving COVID-19 pandemic
- Better understanding of the security risks in the region and how these apply to their population
  - Identifying triggers and actions for each alert level
- Developing stand-fast protocols & location evacuation planning